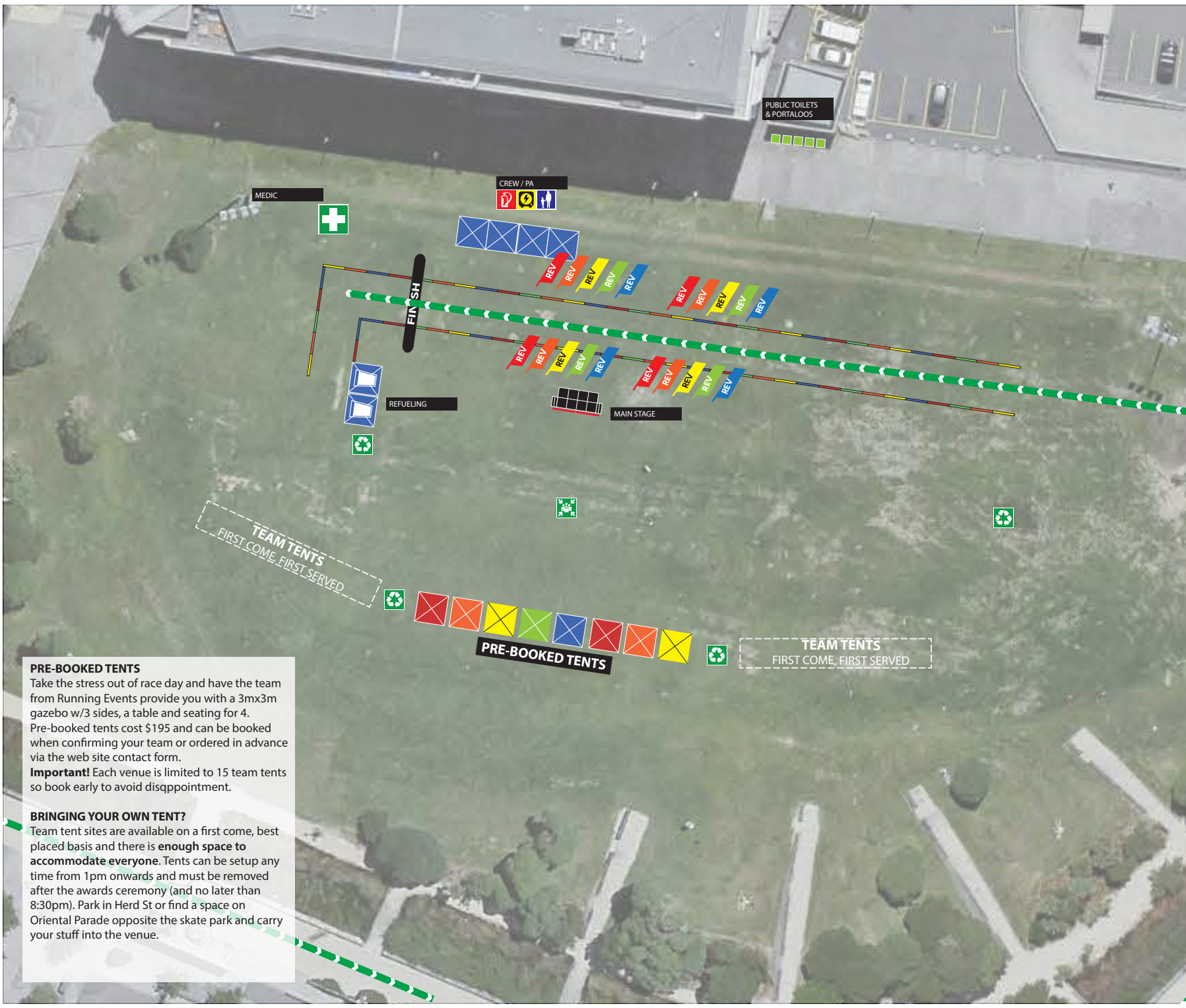


# VENUE MAP

**VENUE**  
CORPORATE CHALLENGE  
ENTERTAINMENT TRIANGLE  
NORTH HAGLEY PARK  
CHRISTCHURCH

-  **FIRST AID**  
See Medics at finish line
-  **ASSEMBLY POINT**  
Center of venue
-  **RECYCLING CENTRE**  
Dispose thoughtfully
-  **FIRE EXTINGUISHER**  
Located in Crew Tent
-  **GENERATORS**  
CAUTION ... KEEP CLEAR!
-  **LOST CHILDREN**  
See staff at REGISTRATION



**PRE-BOOKED TENTS**  
Take the stress out of race day and have the team from Running Events provide you with a 3m x 3m gazebo w/3 sides, a table and seating for 4. Pre-booked tents cost \$195 and can be booked when confirming your team or ordered in advance via the web site contact form.  
**Important!** Each venue is limited to 15 team tents so book early to avoid disappointment.

**BRINGING YOUR OWN TENT?**  
Team tent sites are available on a first come, best placed basis and there is **enough space to accommodate everyone**. Tents can be setup any time from 1pm onwards and must be removed after the awards ceremony (and no later than 8:30pm). Park in Herd St or find a space on Oriental Parade opposite the skate park and carry your stuff into the venue.